

Announcement to Bidders

BID ADDENDUM #1

Saturday December 31, 2011

The following documents are hereby attached as **Addendum 1** for the following project:

UCLA 100 Medical Plaza
Los Angeles, CA 90024
University of California, Los Angeles

Suite 730 Minor TI

Description of Addendum

General.

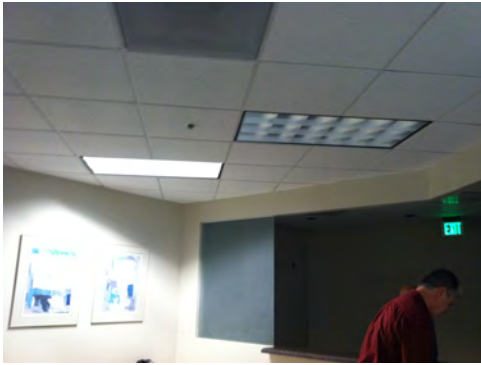
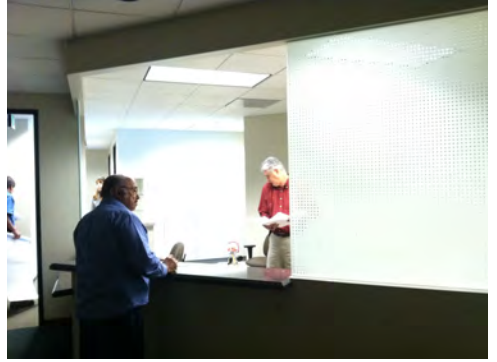
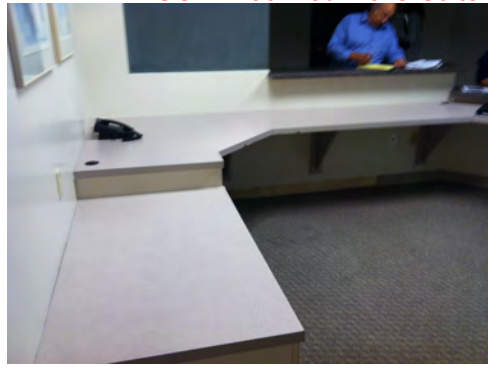
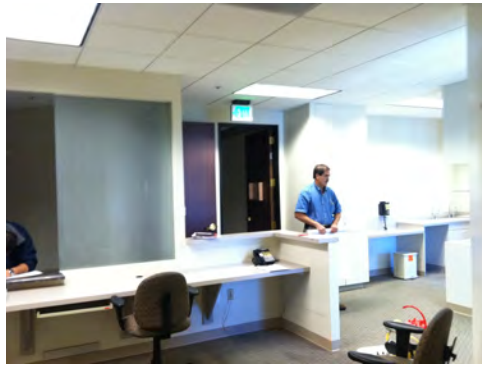
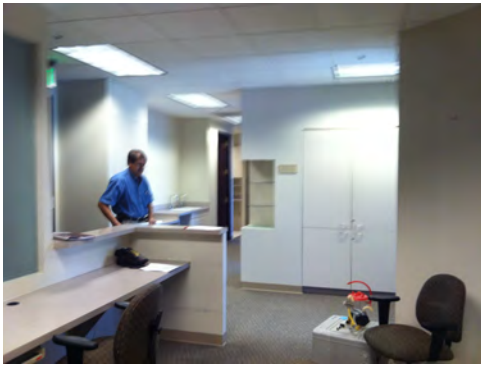
- 1) See attached Plumbing page P3.0 that was not included in the PDF set provided.
- 2) The Bid Date should read 11am, Tuesday, January 10th, 2012.
- 3) See attached photos taken by Totum at the job walk. FYI only.
- 4) Bidders who attended the Mandatory Job Walk: Cannon, Parker Brown, and SBS Corp.
- 5) The University shall issued a revised Bid Form with Addendum 2, with "Addendum 2" within the footer. This Bid Form must be used.

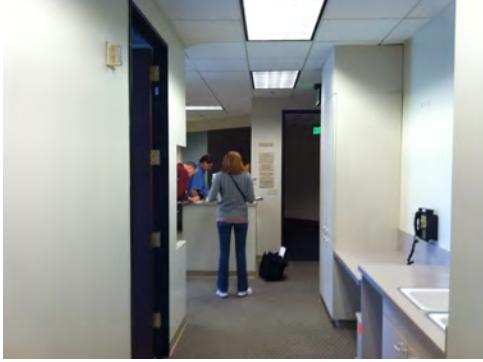
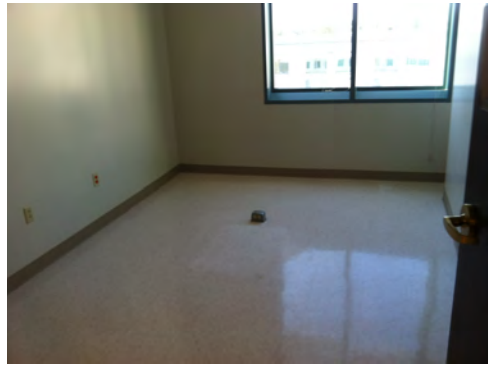
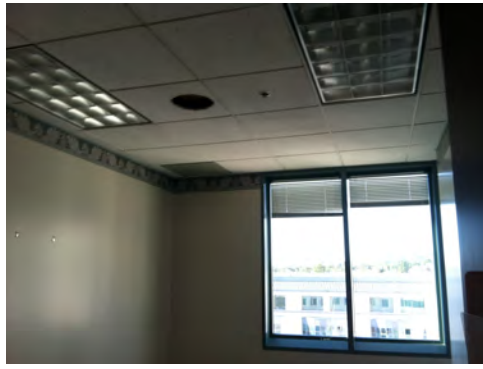
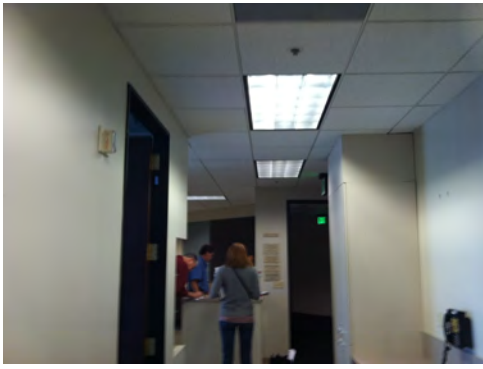
All **questions** and requests for clarifications shall be in writing and faxed or email to the owner's representative, Danny Kaye at Totum at (310) 351 0138 or email (danny@totumconsulting.com) or (fax): (818) 610 1547

End of addendum #1

THE REGENTS OF THE UNIVERSITY OF CALIFORNIA

December 2011





PIPE PENETRATIONS THROUGH RATED FLOOR

SCALE: NONE 7

F-rating = Three hours
T-rating = Zero hour

- FLOOR OR WALL ASSEMBLY: MINIMUM OF 4 1/2 INCH-THICK LIGHTWEIGHT OR NORMAL-WEIGHT CONCRETE (100-150 PCF) FLOOR OR MINIMUM 5 INCH-THICK CONCRETE WALL. WALLS MAY ALSO BE CONSTRUCTED OF CODE-COMPLYING CONCRETE BLOCKS. CONCRETE AND CONCRETE BLOCK THICKNESS MUST COMPLY WITH UBC TABLES 7-B AND 7-C.
- STEEL SLEEVE: OPTIONAL SCHEDULE 40 (OR HEAVIER) STEEL SLEEVE CAST INTO FLOOR OR WALL WITH LENGTH EQUAL TO THICKNESS OF FLOOR OR WALL. THE MAXIMUM SLEEVE DIAMETER AND HOLE DIAMETER WHERE THE SLEEVE IS OMITTED IS 6, 8 AND 14 INCHES FOR PENETRATING ITEMS OF CABLES. 4-INCH DIAMETER METALLIC PIPES AND 10-INCH METALLIC PIPES, RESPECTIVELY.
- METALLIC PIPE: THE FOLLOWING TYPES AND SIZES OF METALLIC PIPES, TUBING OR CONDUITS MAY BE USED, WITH A MAXIMUM OF ONE PIPE, TUBING OR CONDUIT INSTALLED WITHIN THE THROUGH-OPENING:
 - NOMINAL 10" DIAMETER (OR SMALLER) SCHEDULE 10 (OR HEAVIER) STEEL PIPE. THE ANNULAR SPACE BETWEEN THE PIPE AND THE PERIPHERY OF THE OPENING MAY RANGE FROM A MINIMUM OF 1/4 INCH TO A MAXIMUM OF 2 1/2 INCHES.
 - NOMINAL 4 INCH DIAMETER (OR SMALLER) ELECTRICAL METALLIC TUBING (EMT) OR GALVANIZED STEEL RIGID CONDUIT, OR SCHEDULE 10 (OR HEAVIER) STEEL PIPE. THE ANNULAR SPACE BETWEEN THE PIPE AND THE PERIPHERY OF THE OPENING MAY RANGE FROM A MINIMUM OF 1/4 INCH TO A MAXIMUM OF 3 1/4 INCHES.
- CABLES: (NOT SHOWN) AS AN OPTION TO ITEM 3, MINIMUM 10 PERCENT TO MAXIMUM 40 PERCENT FILL OF MAXIMUM 100 PAIRS NO 24 AWG TELEPHONE CABLES WITH POLYVINYL CHLORIDE INSULATION AND JACKETED. THE ANNULAR SPACE BETWEEN THE CABLES AND THE PERIPHERY OF THE OPENING MAY RANGE FROM A MINIMUM OF 1/4 INCH TO A MAXIMUM OF 3 1/2 INCHES. CABLES TO BE RIGIDLY SUPPORTED ON BOTH SIDES OF THE WALL ASSEMBLY.
- FORMING MATERIAL: MINIMUM 3-INCH THICKNESS OF THERMAFIBER SAFING INSULATION FIRMLY PACKED BETWEEN THE PENETRANT AND THE PERIPHERY OF THE OPENING AS A PERMANENT FORM. THE FORMING MATERIAL SHALL BE RECESSED A MINIMUM OF 1 INCH FROM TOP SURFACE OF THE FLOOR ASSEMBLY AND BOTH SURFACES OF WALL ASSEMBLY.
- FILL, VOID OR CAVITY MATERIAL: MIXED FIRECODE COMPOUND APPLIED TO THE TOP SURFACE OF THE FORMING MATERIAL WITHIN THE ANNULUS BETWEEN THE PENETRATING ITEM AND THE PERIPHERY OF OPENING TO A MINIMUM DEPTH OF 1 INCH. THE COMPOUND SHALL BE TROWELED FLUSH WITH THE TOP SURFACE OF THE FLOOR AND BOTH SURFACES OF THE WALL ASSEMBLY.

PIPE THRU RATED WALL

SCALE: NONE 4

PIPE AND CONDUIT PENETRATIONS:
PENETRATIONS OF PIPES, CONDUITS, ETC., IN WALLS, FLOORS OR CEILING ASSEMBLIES REQUIRING PROTECTED OPENINGS SHALL BE FIRE STOPPED. FIRE STOP MATERIAL SHALL BE A TESTED ASSEMBLY AS PRESCRIBED IN UBC STANDARD 7-1 AND AS APPROVED BY THE STATE FIRE MARSHAL. (CBC 709.6, 710.2)

CLEANOUT DETAILS

SCALE: NONE 1

NOTES:
1. FOR COPPER TUBING USE FELT LINED B3690F OR PLASTIC COATED B3690C HANGERS. INSTALL HANGERS AT 4'-0" O.C. MAXIMUM DESIGN LOAD 75 LBS.

PIPE PENETRATION THRU RATED ASSEMBLY

SCALE: NONE 8

F-rating = One hour
T-rating = Zero hour and one hour (See item 2)

- WALL ASSEMBLY: THE FIRE RATED GYPSUM WALLBOARD/STUD WALL ASSEMBLY SHALL COMPLY WITH THE CODE FOR A ONE-HOUR RATING AND SHALL INCLUDE THE FOLLOWING CONSTRUCTION FEATURES:
 - STUDS-WALL FRAMING MAY CONSIST OF EITHER WOOD STUDS OR STEEL CHANNEL STUDS. WOOD STUDS TO CONSIST OF NOMINAL 2X4 INCH LUMBER SPACED 16" O.C., MAXIMUM. STEEL STUDS TO BE A MINIMUM OF 2 1/2 INCHES WIDE AND A MAXIMUM OF 24" O.C.
 - BATTS AND BLANKETS-NOMINAL 1 1/2 INCH-THICK MINERAL WOOL BATTS WITH A 2.75 PCF DENSITY, FRICTION-FITTED TO FILL INTERIOR OF STUD CAVITIES.
 - WALLBOARD, GYPSUM-TWO LAYER OF NOMINAL 5/8 INCH-THICK UNITED STATES GYPSUM CORPORATION TYPE-C GYPSUM WALLBOARD, EACH FACE OF WALL. MAXIMUM DIAMETER OF OPENING IS 6 INCHES.
- THROUGH-PENETRANTS: ONE METALLIC PIPE, CONDUIT OR TUBE TO BE CENTERED WITHIN THE FIRE STOP SYSTEM. PIPE, CONDUIT OR TUBING TO BE RIGIDLY SUPPORTED ON BOTH SIDES OF WALL ASSEMBLY. THE FOLLOWING TYPES AND SIZES OF METALLIC PIPES, CONDUITS AND TUBING MAY BE USED:
 - STEEL PIPE-NOMINAL 4" DIAMETER (OR SMALLER) SCHEDULE 10 (OR HEAVIER) STEEL PIPE. THE ANNULAR SPACE SHALL BE A MINIMUM OF 1/4 INCH TO A MAXIMUM OF 1 1/4 INCHES. WHEN STEEL PIPE IS USED, THE T-RATING IS 0-HOUR.
 - CONDUIT-NOMINAL 4 INCH DIAMETER (OR SMALLER) ELECTRICAL METALLIC TUBING (EMT) OR STEEL CONDUIT. THE ANNULAR SPACE SHALL BE A MINIMUM OF 1/4 INCH TO A MAXIMUM OF 1 3/16 INCHES. WHEN COPPER TUBING IS USED, THE T-RATING IS ZERO HOURS.
 - COPPER TUBING-NOMINAL 3/4 INCH DIAMETER (OR SMALLER) TYPE L (OR HEAVIER) COPPER TUBING. THE ANNULAR SPACE SHALL BE A MINIMUM OF 1/4 INCH TO A MAXIMUM OF 1 3/16 INCHES. WHEN COPPER TUBING IS USED, THE T-RATING IS ZERO HOURS.
 - COPPER TUBING-NOMINAL 4-INCH DIAMETER (OR SMALLER) TYPE L (OR HEAVIER) COPPER TUBING. THE ANNULAR SPACE SHALL BE A MINIMUM OF 3/8 INCH TO A MAXIMUM OF 1 1/4 INCHES. WHEN COPPER TUBING IS USED, THE T-RATING IS ZERO HOURS.
- FORMING MATERIAL: MINIMUM 2 1/2-INCH THICKNESS OF THERMAFIBER SAFING INSULATION FIRMLY PACKED INTO OPENINGS AS A PERMANENT FORM. FORMING MATERIAL IS TO BE RECESSED FROM BOTH SURFACES OF WALL TO ACCOMMODATE THE REQUIRED THICKNESS OF FILL MATERIAL.
- FILL, VOID OR CAVITY MATERIAL: MINIMUM 1/2-INCH THICKNESS OF FIRECODE COMPOUND FILL MATERIAL APPLIED WITHIN THE ANNULUS, FLUSH WITH BOTH SURFACES OF WALL.

SINGLE PIPE HANGER DETAIL

SCALE: NONE 5

NOTES:
1. SIZE HANGER TO ADEQUATELY SUPPORT LOAD (REFER TO B-LINE HANGER CATALOG).
2. FOR COPPER TUBING USE FELT LINED B3690F OR PLASTIC COATED B3690C HANGERS. INSTALL HANGERS AT 4'-0" O.C. MAXIMUM DESIGN LOAD 125 LBS.

PIPE PENETRATION THROUGH RATED ASSEMBLY

SCALE: NONE 6

F-rating = Two hour
T-rating = Zero hour

- WALL ASSEMBLY: THE FIRE RATED GYPSUM WALLBOARD/STUD WALL ASSEMBLY WITH ROUND OPENINGS AT THROUGH-PENETRATIONS OF CABLES AND METALLIC PIPE. THE WALL ASSEMBLY SHALL COMPLY WITH THE CODE FOR A TWO-HOUR RATING AND SHALL INCLUDE THE FOLLOWING CONSTRUCTION FEATURES:
 - STUDS-WALL FRAMING MAY CONSIST OF EITHER WOOD STUDS OR STEEL CHANNEL STUDS. WOOD STUDS TO CONSIST OF NOMINAL 2X4 INCH LUMBER SPACED 16" O.C., MAXIMUM. STEEL STUDS TO BE A MINIMUM OF 2 1/2 INCHES WIDE AND A MAXIMUM OF 24 INCHES O.C.
 - WALLBOARD, GYPSUM-TWO LAYER OF NOMINAL 4 FOOT WIDE BY 5/8 INCH-THICK UNITED STATES GYPSUM CORPORATION TYPE-C GYPSUM WALLBOARD, EACH FACE OF WALL.
- METALLIC PIPE:
 - NOMINAL 4" DIAMETER (OR SMALLER) SCHEDULE 10 (OR HEAVIER) STEEL PIPE, STEEL CONDUIT OR ELECTRICAL METALLIC TUBING (EMT) WITH A 7 INCH-DIAMETER WALL OPENING. A MAXIMUM OF ONE METALLIC PIPE, TUBING OR CONDUIT MAYBE USED, WITH THE PIPE, CONDUIT OR TUBING RIGIDLY SUPPORTED ON EACH SIDE OF THE WALL.
 - NOMINAL 6 INCH DIAMETER (OR SMALLER) TYPE L (OR HEAVIER) COPPER TUBING WITH A NOMINAL 9 INCH DIAMETER WALL OPENING. MINIMUM OF 1 INCH TO A MAXIMUM OF 1 5/8 INCHES ANNULAR SPACE BETWEEN THE PENETRATING ITEM AND THE PERIPHERY OF OPENING.
- CABLES: AS AN OPTION TO ITEM 2, MINIMUM 10 PERCENT TO MAXIMUM 40 PERCENT FILL OF MAXIMUM 100 PAIRS NO 24 AWG TELEPHONE CABLES WITH POLYVINYL CHLORIDE INSULATION AND JACKETED WITH A NOMINAL 6-INCH-DIAMETER WALL OPENING. THE ANNULAR SPACE BETWEEN THE CABLES AND THE PERIPHERY OF THE OPENING MAY RANGE FROM A MINIMUM OF 1/4 INCH TO A MAXIMUM OF 4 1/2 INCHES. CABLES TO BE RIGIDLY SUPPORTED ON BOTH SIDES OF THE WALL ASSEMBLY.
- FORMING MATERIAL: MINIMUM 3-INCH THICKNESS OF THERMAFIBER SAFING INSULATION FIRMLY PACKED BETWEEN THE PENETRANT AND THE PERIPHERY OF THE OPENING AS A PERMANENT FORM. THE FORMING MATERIAL SHALL BE CENTERED IN WALLS MID-DEPTH AND RECESSED 1 INCH FROM EACH SURFACE OF THE WALL ASSEMBLY.
- FILL, VOID OR CAVITY MATERIAL: MIXED FIRECODE COMPOUND APPLIED TO EACH SURFACE OF THE FORMING MATERIAL WITHIN THE ANNULUS BETWEEN THE PENETRATING ITEM AND THE PERIPHERY OF OPENING TO A MINIMUM DEPTH OF 1 INCH. MATERIAL SHALL BE TROWELED FLUSH WITH BOTH SURFACES OF WALL ASSEMBLY.

PIPE HANGER DETAIL

SCALE: NONE 2

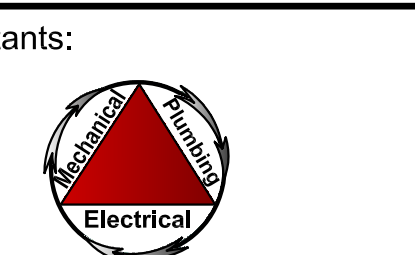
SINK PIPING

SCALE: NONE 3



architecture & design
408 1/2 Palisades Ave.
Santa Monica, CA 90402
ph. (310) 451-2153 / fax (310) 451-2254

All drawings, specifications and documents prepared by The Borsuk Company are instruments of service for use solely with respect to the project and shall not be used on other projects, for additions to this project or for completion of this project by others without the express written permission of The Borsuk Company. The Borsuk Company shall be deemed the author of these documents and shall retain all common law, statutory and other rights, including copyrights.



mp+e consultants
phones (909) 438-2729 fax (866) 438-7799
14808 Bluebell Drive Chino Hills, CA 91709
mp@mpconsultants.com
jobs 151

Owner:
REGENTS OF THE UNIVERSITY OF CALIFORNIA

Project:
**TENANT IMPROVEMENTS FOR:
UCLA 100 MEDICAL PLAZA
SUITE 730 MINOR TI
UCLA PROJECT #20111003-158-12**

Address:
**UCLA 100 MEDICAL PLAZA,
SUITE 730
WESTWOOD, CA 90095**

Date:
11/08/2011

Revisions:

Sheet Title:
PLUMBING DETAILS

Scale:
AS NOTED

Sheet:

P3.0